



entrance patio facing the pool and the sea



from left to right: garden façade, exterior view

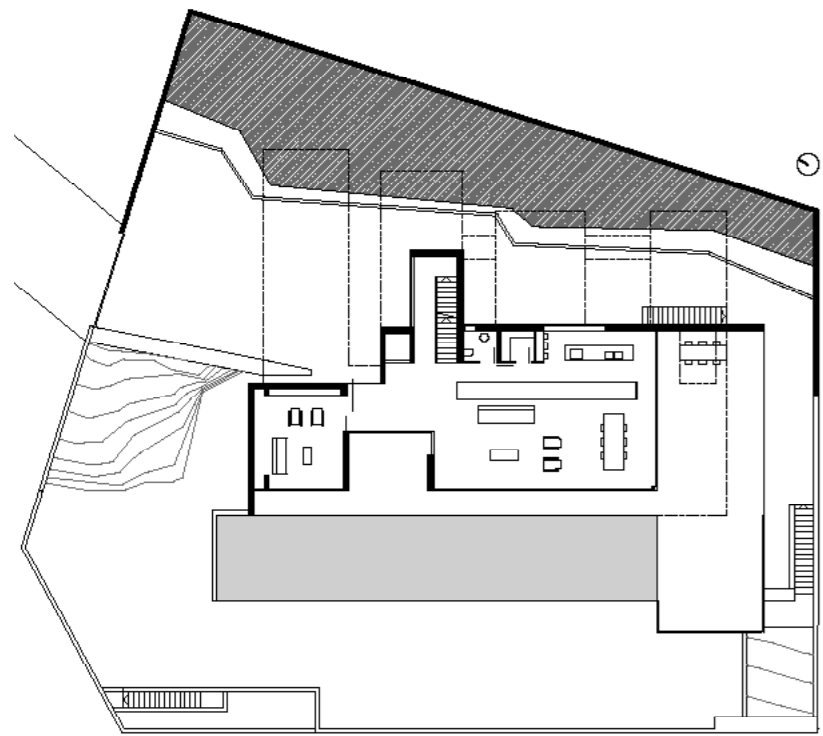
Reflections House

Saronida, Greece

Architect: mplum architects
Interior designers: mplum architects, Lamis Shawwa
Year of completion: 2013
Gross floor area: 590 m²
Materials used: concrete, glass

This modern, minimalist home is a breathtaking example of Mediterranean architecture. On a steeply inclined site with sweeping views, a smooth-as-glass pool extends parallel to the contours of the ground. Immediately behind this pool and beyond a vast glass façade, the living areas are simply deployed in an open arrangement, enabling the perfect flow of light and space. Only a beautiful covered

courtyard, revealed to the visitor upon entering the house, interrupts their continuity. Bridges connected to the rock behind through planted private courtyards and hovering above the entry to the house contain the bedrooms. Simple yet stylish, modest yet daring, Reflections House represents a new and exciting departure in Mediterranean residential design.



from above to below: ground floor plan, bedroom with framed view of the sea



from left to right, from above to below: bedroom with inner patio, courtyard at basement level, dining and living area on ground floor